

cell Colour concept

Stainless steel:



Natural **4113**

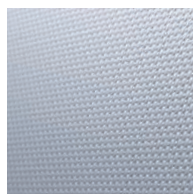


Bronze **4213**



Platinum **4313**

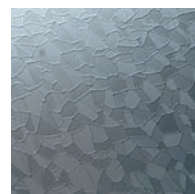
Surface structure for stainless steel:



Linnen **L**

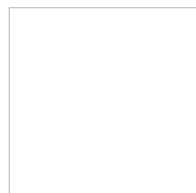


Brushed **G**



Patterned **A**
(Austenit)

Aluminium:



Strong white **9522**
similar to RAL 9003



Agate grey **7319**
similar to RAL 7038



Anthracite **7603**
similar to RAL 7005



Dark blue **5603**
similar to RAL 5008

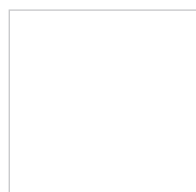


Dark red **3603**
similar to RAL 3004



Deep black **7613**
similar to RAL 9005

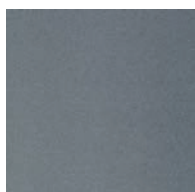
Steel:



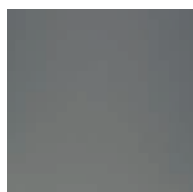
Traffic white **9317**
similar to RAL 9016



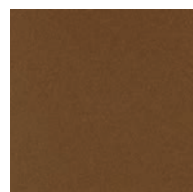
Light grey **7208**
similar to RAL 7035



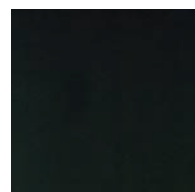
Silver grey **7303**
similar to RAL 9006
(metallic)



Metal grey **7507**
similar to 9007



Copper brown **8307**
similar to NCS S 4030-Y30R
(metallic)



Brilliant black **7907**
similar to RAL 9017



Digital print ²



BiColor ³

Profiles, hinges, supporting legs and accessories:



White **02** ¹
similar to RAL 9016



Manhattan **05** ¹
similar to NCS 2801-Y36R



Anthracite **03** ¹
similar to RAL 7043



Dark blue **04** ¹
similar to RAL 5003



Red **11** ^{*}
similar to RAL 3003



Dark red **01** ¹
similar to RAL 3005



Yellow **10** ¹
similar to RAL 1023



Satin anodised **08**
similar to E6/EV1



Stainless steel V2A **12**

Colour concept valid from 07/2019

¹ Coloured profiles, hinges and supporting legs available for variocell

² Special colours as well as customised digital prints available on request for a surcharge, prolonged delivery times must be considered.

³ Due to the composite construction of cell, the panels and doors can have different colours – cell BiColor!

Please note that the colours shown above may slightly differ from the original colour due to typographic reasons. We would gladly advise you personally.